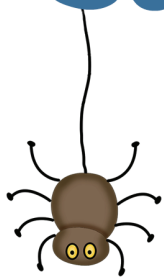
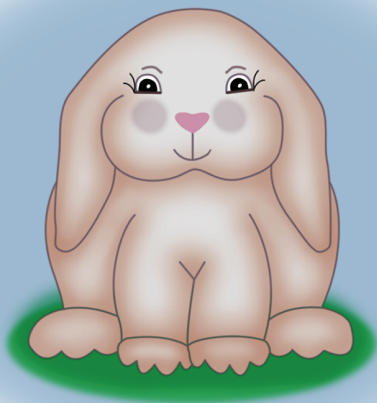


# Songs I Already Know



## Ten Beginning Folk Songs

Arranged for Piano by Susan Paradis



# Songs I Already Know!



Arranged by Susan Paradis

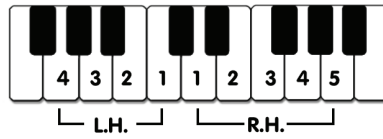


Twinkle, Twinkle, Little Star .....	3
Down by the Station .....	5
London Bridge is Falling Down .....	7
Eency Weency Spider .....	9
Are You Sleeping Brother John .....	11
Hickory, Dickory Dock .....	13
It's Raining It's Pouring/Rain Rain Go Away .....	15
Do Your Ears Hang Low .....	17
Bingo .....	18
The Farmer in the Dell .....	19





# Twinkle, Twinkle, Little Star



Traditional

Arr. by Susan Paradis

**Smoothly**

1

Twin-kle, Twin-kle, lit - tle star, How I won-der what you are.

4 1



Duet (Student plays one octave higher, partner plays one octave lower)

Up a - bove the world so high, like a dia-mond in the sky.

This system contains the first four measures of the song. The treble clef staff has a melody of quarter notes: C4, D4, E4, F4, G4, A4, B4, A4, G4, F4, E4, D4, C4. The bass clef staff has a simple accompaniment of quarter notes: C3, G2, F2, E2, D2, C2, B1, A1, G1, F1, E1, D1, C1.

Twin - kle Twin - kle lit - tle star. How I won - der what you are.

This system contains the next four measures. The treble clef staff continues the melody: C4, D4, E4, F4, G4, A4, B4, A4, G4, F4, E4, D4, C4. The bass clef staff continues the accompaniment: C3, G2, F2, E2, D2, C2, B1, A1, G1, F1, E1, D1, C1.



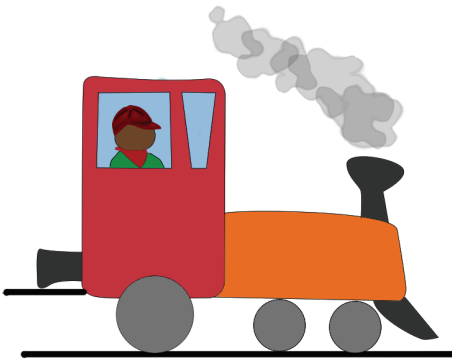
## Duet

5

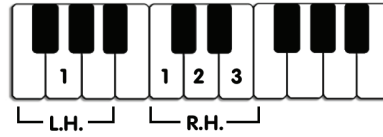
This system contains measures 5 through 8. The treble clef staff has a melody of eighth notes: C4, D4, E4, F4, G4, A4, B4, A4, G4, F4, E4, D4, C4. The bass clef staff has a simple accompaniment of quarter notes: C3, G2, F2, E2, D2, C2, B1, A1, G1, F1, E1, D1, C1.

9

This system contains measures 9 through 12. The treble clef staff has a melody of eighth notes: C4, D4, E4, F4, G4, A4, B4, A4, G4, F4, E4, D4, C4. The bass clef staff has a simple accompaniment of quarter notes: C3, G2, F2, E2, D2, C2, B1, A1, G1, F1, E1, D1, C1.



# Down By the Station



Traditional  
Arr. by Susan Paradis

**Lively**

1

Down by the sta - tion ear - ly in the morn - ing,

1

See the lit - tle puf - fer - bel - lies all in a row.

Duet (Student plays one octave higher, partner plays one octave lower)

1

Down by the sta - tion ear - ly in the morn - ing,

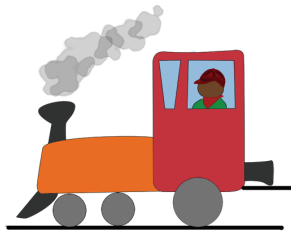
1

See the en - gine dri - ver start - ing up the en - gine.

This block contains the first line of musical notation. It features a grand staff with a treble clef on the upper staff and a bass clef on the lower staff. The melody is written in the treble clef, consisting of quarter notes on the G4 line, A4 space, B4 space, C5 space, and D5 space, followed by a half note on E5 space. The lyrics are placed below the treble staff. The bass staff contains a single half note on G3 space.

1 2  
Puff puff, choo choo, off we go!

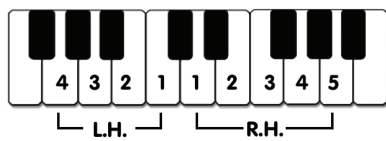
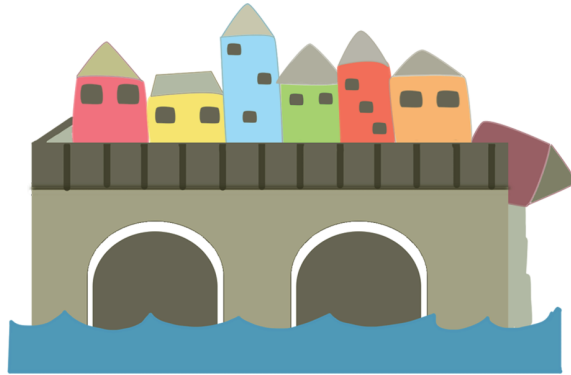
This block contains the second line of musical notation. It features a grand staff with a treble clef on the upper staff and a bass clef on the lower staff. The melody is written in the treble clef, starting with a quarter note on G4 space, followed by a quarter note on A4 space, a half note on B4 space, a quarter note on C5 space, a quarter note on D5 space, and a half note on E5 space. The lyrics are placed below the treble staff. The bass staff contains a half note on G3 space. The first measure is marked with a '1' and the second measure with a '2'. The piece ends with a double bar line.



9 2

This block contains the third line of musical notation. It features a grand staff with a treble clef on the upper staff and a bass clef on the lower staff. The melody is written in the treble clef, starting with a quarter note on G4 space, followed by a quarter note on A4 space, a quarter note on B4 space, a quarter note on C5 space, a half note on D5 space, a quarter rest, a quarter rest, a quarter note on E5 space, a quarter note on D5 space, and a half note on C5 space. The lyrics are placed below the treble staff. The bass staff contains a half note on G3 space, a quarter note on F3 space, a quarter note on E3 space, a quarter note on D3 space, a quarter note on C3 space, a quarter note on B2 space, a quarter note on A2 space, and a half note on G2 space. The first measure is marked with a '9' and the second measure with a '2'. The piece ends with a double bar line.

# London Bridge is Falling Down



Traditional  
Arr. by Susan Paradis

**Moderately**

1

Lon-don Bridge is fall - ing down, fall - ing down, fall - ing down.

1

Duet (Student plays one octave higher, partner plays one octave lower)

5  
1

1  
*With pedal*

Lon - don Bridge is fall - ing down. My fair la - dy.

This system contains the first four measures of the song. The treble clef staff has a melody of quarter notes: C4, D4, E4, F4, G4, A4, B4, C5. The bass clef staff has a simple accompaniment of quarter notes: C3, D3, E3, F3, G3, A3, B3, C4.

Take the key and lock it up, lock it up, lock it up.

This system contains the next four measures. The treble clef staff continues the melody: C5, B4, A4, G4, F4, E4, D4, C4. The bass clef staff continues the accompaniment: C3, D3, E3, F3, G3, A3, B3, C4.

Take the key and lock it up. My fair la - dy.

This system contains the final four measures. The treble clef staff has a melody: C4, D4, E4, F4, G4, A4, B4, C5. The bass clef staff has an accompaniment: C3, D3, E3, F3, G3, A3, B3, C4. The system ends with a double bar line.



## Duet

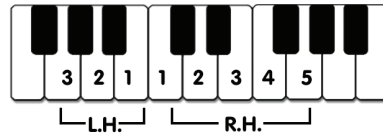
5

This section is a duet for two voices. The treble clef staff starts with a box containing the number '5'. The melody consists of quarter notes: C4, D4, E4, F4, G4, A4, B4, C5. The bass clef staff has a simple accompaniment of quarter notes: C3, D3, E3, F3, G3, A3, B3, C4. The system ends with a double bar line.





# Eeency Weency Spider



Traditional

Arr. by Susan Paradis

**Cheerfully**

1

Een - cy ween - cy spi - der went up the wa - ter spout.

The first line of music is in 4/4 time. The treble clef staff contains the melody with lyrics underneath. The bass clef staff is empty. The melody starts with a quarter rest, followed by quarter notes: C4, D4, E4, F4, G4, A4, B4, C5. The final note is a whole note C5.

3

Down came the rain and washed the spi - der out.

The second line of music is in 4/4 time. The treble clef staff contains the melody with lyrics underneath. The bass clef staff is empty. The melody starts with a quarter rest, followed by quarter notes: C4, D4, E4, F4, G4, A4, B4, C5. The final note is a whole note C5.

Duet (Student plays one octave higher, partner plays one octave lower)

1

5 3

The duet section is in 4/4 time. The treble clef staff contains a melody of eighth notes with lyrics underneath. The bass clef staff contains a bass line of whole notes. The melody starts with a quarter rest, followed by eighth notes: C4, D4, E4, F4, G4, A4, B4, C5. The bass line starts with a whole note C3, followed by whole notes: D3, E3, F3, G3, A3, B3, C4. The final note is a whole note C4.

Copyright © 2016 by Susan R. Paradis • [www.SusanParadis.com](http://www.SusanParadis.com)

This multi-copy license allows the purchaser to print as many copies as they wish in a single studio.

This electronic file is for use by the purchaser only and may not be shared.

Out came the sun and dried up all the rain, and the

3

een - cy ween - cy spi - der went up the spout a - gain.



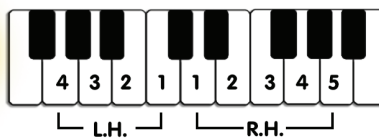
9

een - cy ween - cy spi - der went up the spout a - gain.

4



# Are You Sleeping?



Traditional

Arr. by Susan Paradis

**Smoothly**

1

Are you sleep - ing, Are you sleep - ing

1

2

Broth - er John? Broth - er John?

Duet (Student plays one octave higher, partner plays one octave lower)

1 3

4

Morn-ing bells are ring - ing, Morn-ing bells are ring - ing.

This system of music consists of two staves: a treble clef staff and a bass clef staff. The treble staff contains a melody of quarter notes: G4, A4, B4, C5, D5, E5, D5, C5, B4, A4, G4. The bass staff contains a simple accompaniment of quarter notes: G3, F3, E3, D3, C3, B2, A2, G2. The lyrics are written below the treble staff, with hyphens indicating syllables across notes.

Ding, Ding, Dong. Ding, ding, dong.

1 4

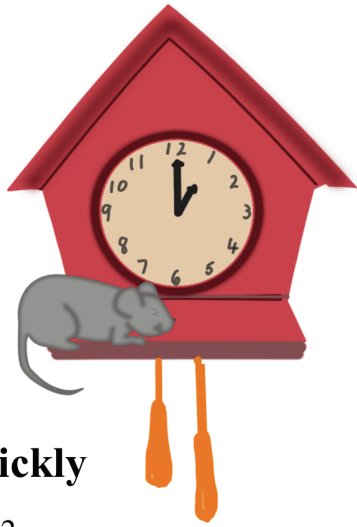
This system of music consists of two staves. The treble staff contains a melody of quarter notes: G4, A4, B4, C5, D5, E5, D5, C5, B4, A4, G4. The bass staff contains a simple accompaniment of quarter notes: G3, F3, E3, D3, C3, B2, A2, G2. The lyrics are written below the treble staff, with hyphens indicating syllables across notes. The system ends with a double bar line. Below the first two measures, the numbers '1' and '4' are written.



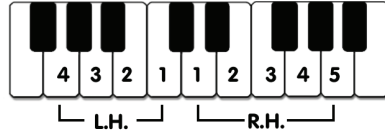
9

1

This system of music consists of two staves. The treble staff contains a melody of quarter notes: G4, A4, B4, C5, D5, E5, D5, C5, B4, A4, G4. The bass staff contains a simple accompaniment of quarter notes: G3, F3, E3, D3, C3, B2, A2, G2. The system ends with a double bar line. Below the first measure, the number '9' is written in a box. Below the last measure, the number '1' is written.



# Hickory Dickory Dock



Traditional  
Arr. by Susan Paradis

**Quickly**

2

Hick - o - ry Dick - o - ry Dock. The

mouse ran up the clock. The

Duet (Student plays one octave higher)

1

1  
With pedal

5

clock struck one, the mouse ran down,

4

Hick - o - ry Dick - o - ry Dock.

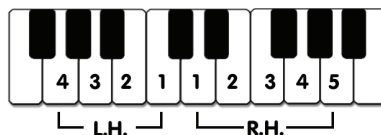
1



9



# It's Raining, It's Pouring Rain, Rain, Go Away



Traditional  
Arr. by Susan Paradis

## Flowing

4 2

1

1

Duet (Student plays one octave higher, partner plays one octave lower)

1

4

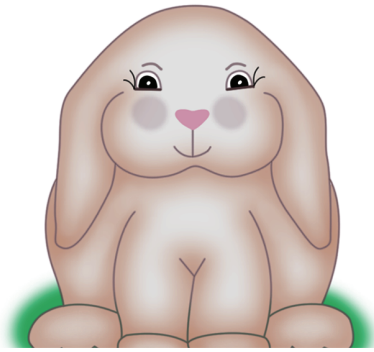
Rain, rain, go a-way, come a - gain an - oth - er day.

Rain, rain, go a - way. Come a - gain an - oth - er day!

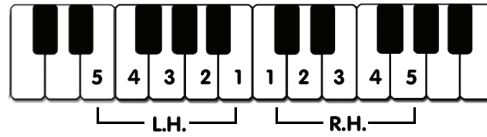


9





# Do Your Ears Hang Low



Traditional

Arr. by Susan Paradis

**Playfully**

3

Do your ears hang low, do they wobble to and

1

fro? Can you tie them in a knot, can you tie them in a

Duet (Student plays one octave higher, partner plays one octave lower)

3

fro? Can you tie them in a knot, can you tie them in a

Copyright © 2016 by Susan R. Paradis • www.SusanParadis.com

This multi-copy license allows the purchaser to print as many copies as they wish in a single studio.

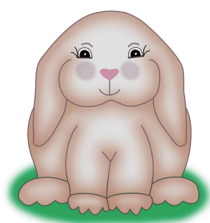
This electronic file is for use by the purchaser only and may not be shared.

bow? Can you throw them over your should-ers like a con-ti-nen-tal

5

1  
sold - ier? Do your ears hang low?

3 Move! 3

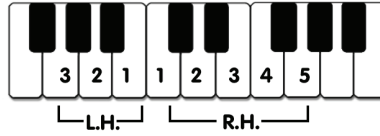


9

1 3 1 3 5



# Bingo



Traditional  
Arr. by Susan Paradis

**Brightly**

1

There was a farm - er had a dog and

3 2

Bin - go was his name - o. B, I,

Duet (Student plays one octave higher, partner plays one octave lower)

B, I, B, I, B, I, B, I, B, I, B, I,

5 2 1

1

2

N, G, O, B, I, N, G, O, B, I,

This musical system consists of two staves. The upper staff is a treble clef with a key signature of one flat (B-flat). The lower staff is a bass clef. The music is in 4/4 time. The first measure contains the notes G4, B4, and D5. The second measure contains B4 and G4. The third measure contains F4, G4, and A4. The fourth measure contains G4 and F4. The lyrics 'N, G, O, B, I, N, G, O, B, I,' are written below the notes.

N, G, O, and Bin - go was his name - o.

1

This musical system consists of two staves. The upper staff is a treble clef with a key signature of one flat (B-flat). The lower staff is a bass clef. The music is in 4/4 time. The first measure contains the notes G4, B4, and D5. The second measure contains B4 and G4. The third measure contains F4, G4, and A4. The fourth measure contains G4 and F4. The lyrics 'N, G, O, and Bin - go was his name - o.' are written below the notes. A fermata is placed over the final note 'o'.

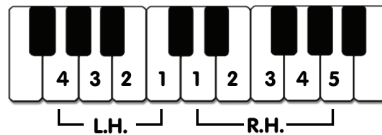


6

This musical system consists of two staves. The upper staff is a treble clef with a key signature of one flat (B-flat). The lower staff is a bass clef. The music is in 4/4 time. The first measure contains the notes G4, B4, and D5. The second measure contains B4 and G4. The third measure contains F4, G4, and A4. The fourth measure contains G4 and F4. The fifth measure contains E4, F4, and G4. The sixth measure contains D4, E4, and F4. The seventh measure contains G4, A4, and B4. The eighth measure contains G4 and F4. The lyrics 'N, G, O, and Bin-go was his name-o.' are written below the notes.



# The Farmer in the Dell



Traditional

Arr. by Susan Paradis

**Happily**

1

Duet (Student plays one octave higher, partner plays one octave lower)

4 2

Heigh - ho, the der - ry - o, the

farm - er in the dell.



9

Name \_\_\_\_\_

Check the songs you can play.

- Twinkle, Twinkle, Little Star
- Down by the Station
- London Bridge is Falling Down
- Eency Weency Spider
- Are You Sleeping Brother John
- Hickory, Dickory Dock
- It's Raining It's Pouring/Rain Rain Go Away
- Do Your Ears Hang Low
- Bingo
- The Farmer in the Dell



My favorite song is \_\_\_\_\_

